

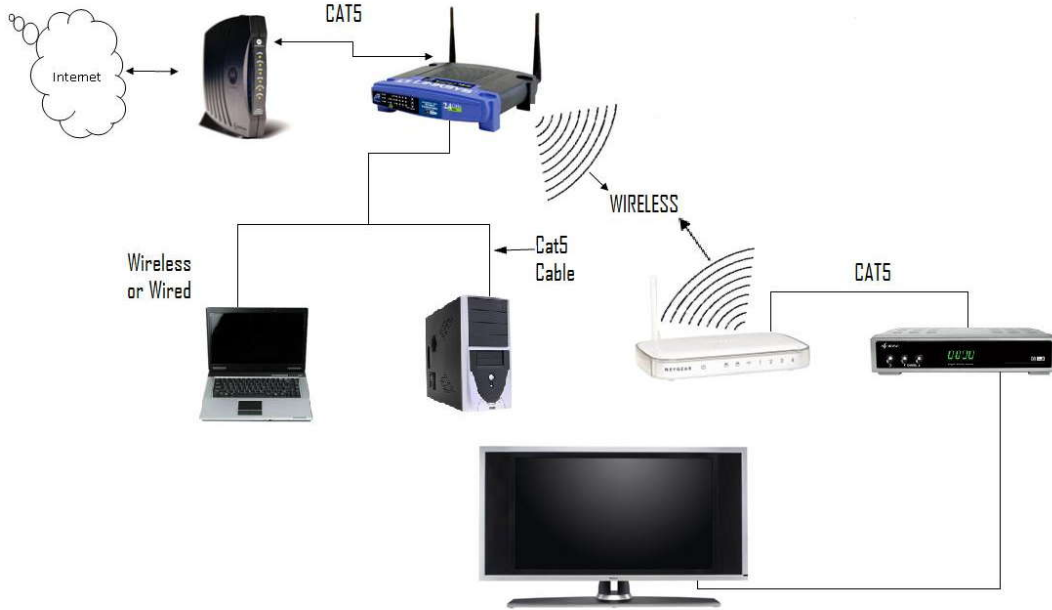
NFusion Wireless Network Step-by-Step Configuration

<u>LINKSYS WIRELESS ROUTER CONFIGURATION</u>	3-6
<u>NETGEAR WGPS606 CONFIGURATION</u>	7-16
<u>CONNECT YOUR NETGEAR TO YOUR NFUSION</u>	17-19

Your home network should look pretty similar to the Network I describe in the following.

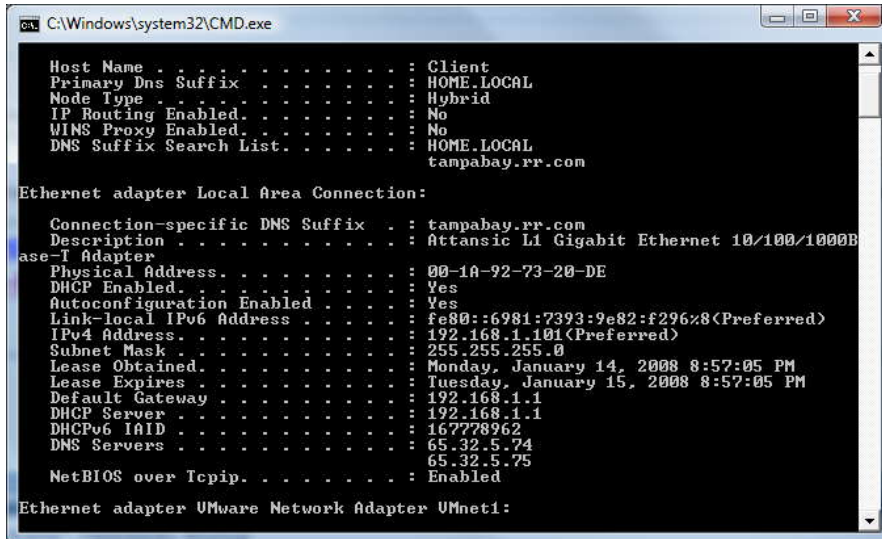
I will walk you through to configure your **Linksys wireless router** and **Netgear WGPS606 Wireless Print Server with 4-port Switch**. First we need to configure your Linksys router. Please make sure that your router at least connect to your pc or laptop with CAT5 Cable. on your router make sure you plug your cat5 to any LAN port **NOT WAN** port.

You should be able to configure your Netgear wireless to work with any brand of wireless router. if you have different brand of wireless router than Linksys. you can skip LINKSYS WIRELESS ROUTER CONFIGURATION and jump straight to NETGEAR CONFIGURATION.



LINKSYS WIRELESS ROUTER CONFIGURATION

We need to know what is your router IP. I'm assuming we don't know anything about it. so first we are going to setup your router. I will help you setup a secure wireless network too.



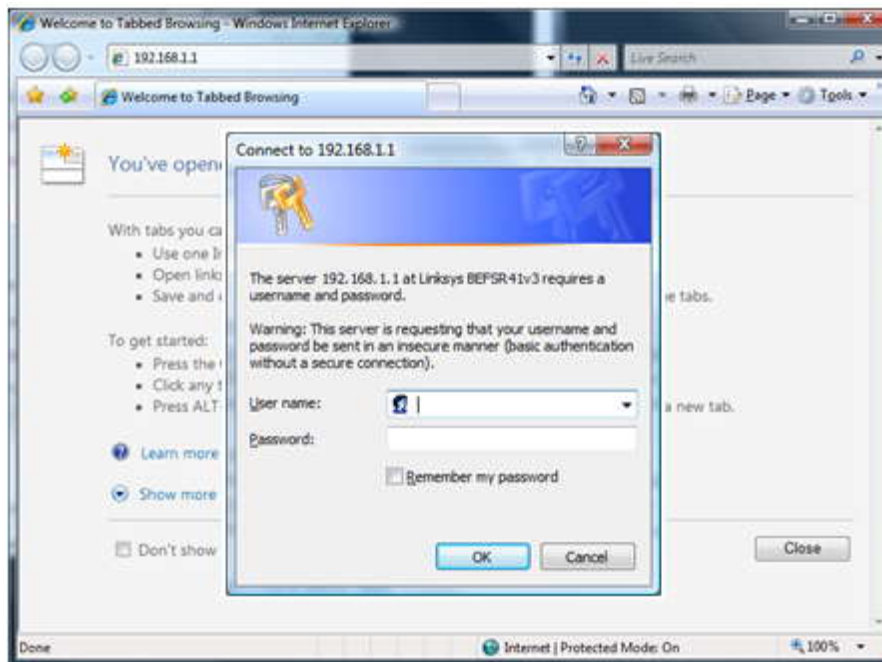
```
ca: C:\Windows\system32\CMD.exe
Host Name . . . . . : Client
Primary Dns Suffix . . . . . : HOME.LOCAL
Node Type . . . . . : Hybrid
IP Routing Enabled. . . . . : No
WINS Proxy Enabled. . . . . : No
DNS Suffix Search List. . . . . : HOME.LOCAL
                                     tampabay.rr.com

Ethernet adapter Local Area Connection:

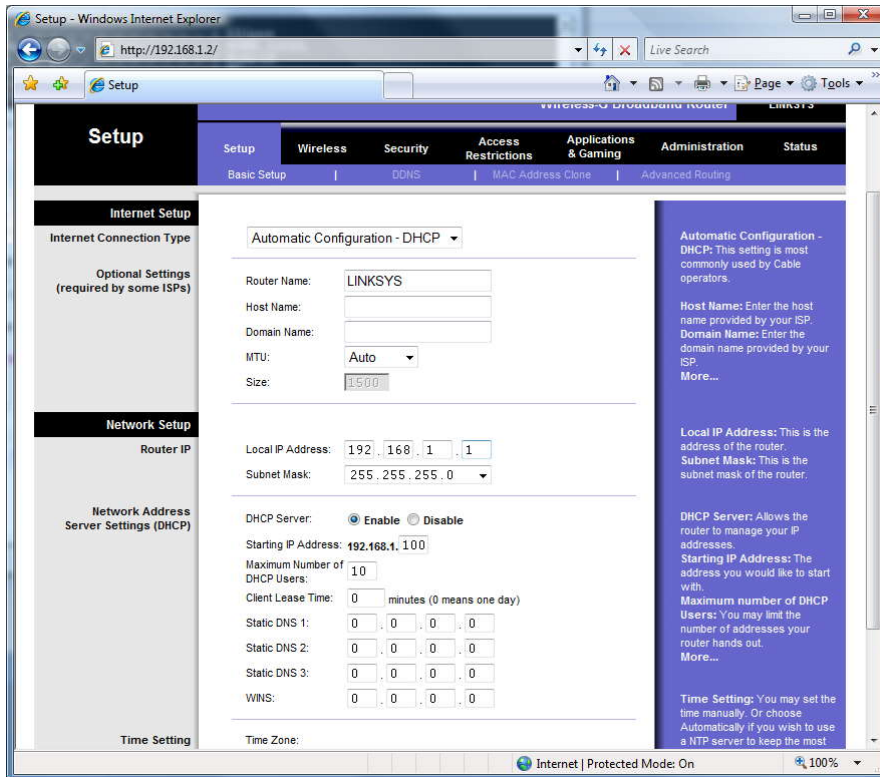
   Connection-specific DNS Suffix  . : tampabay.rr.com
   Description . . . . .           : Attansic L1 Gigabit Ethernet 10/100/1000Base-T Adapter
   Physical Address. . . . .       : 00-1A-92-73-20-DE
   DHCP Enabled. . . . .           : Yes
   Autoconfiguration Enabled . . . : Yes
   Link-local IPv6 Address . . . . . : fe80::6981:7393:9e82:f296%8(Preferred)
   IPv4 Address. . . . .           : 192.168.1.101(Preferred)
   Subnet Mask . . . . .           : 255.255.255.0
   Lease Obtained. . . . .         : Monday, January 14, 2008 8:57:05 PM
   Lease Expires . . . . .         : Tuesday, January 15, 2008 8:57:05 PM
   Default Gateway . . . . .       : 192.168.1.1
   DHCP Server . . . . .           : 192.168.1.1
   DHCPv6 IAID . . . . .           : 167770962
   DNS Servers . . . . .           : 65.32.5.74
                                       65.32.5.75
   NetBIOS over Tcpip. . . . .     : Enabled

Ethernet adapter VMware Network Adapter VMnet1:
```

- On your PC
1. Click **Start->Run** (XP)
Click **Start->Start Search** (Vista)
 2. Type **CMD**, Press **Enter**
 3. On the CMD windows type **IPCONFIG /ALL** then press **OK**
 4. Write down your default Gateway number. in this case. 192.168.1.1
now you can close your CMD windows.



1. Open up your Internet Explorer (IE)
2. on the address bar type your **gateway address** that your wrote down earlier, mine is 192.168.1.1
3. Press **Enter**
Leave the Username (blank)
4. Type your **password** in, default password, either **admin** or **linksys** if you don't know, you should hard reset your router, by hold down the reset button from the back of your router for 30sec.

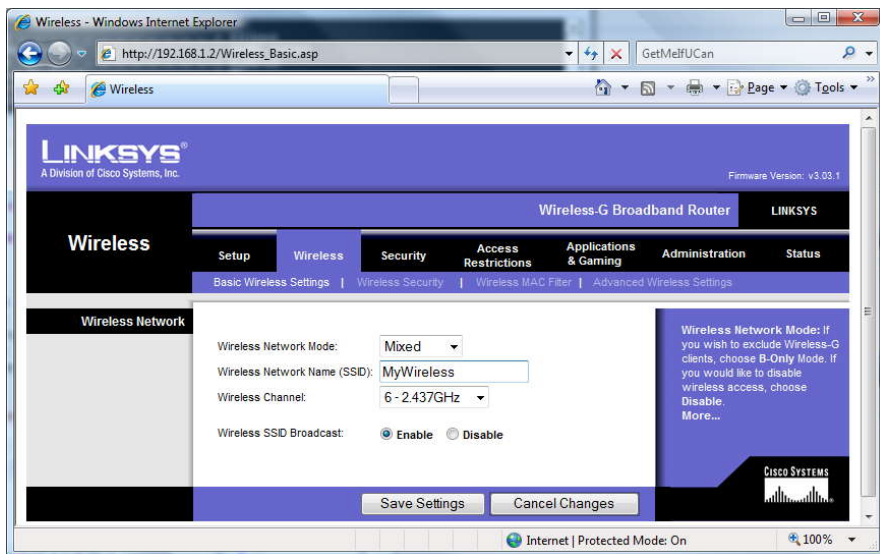


this is main page, everything should leave a default.

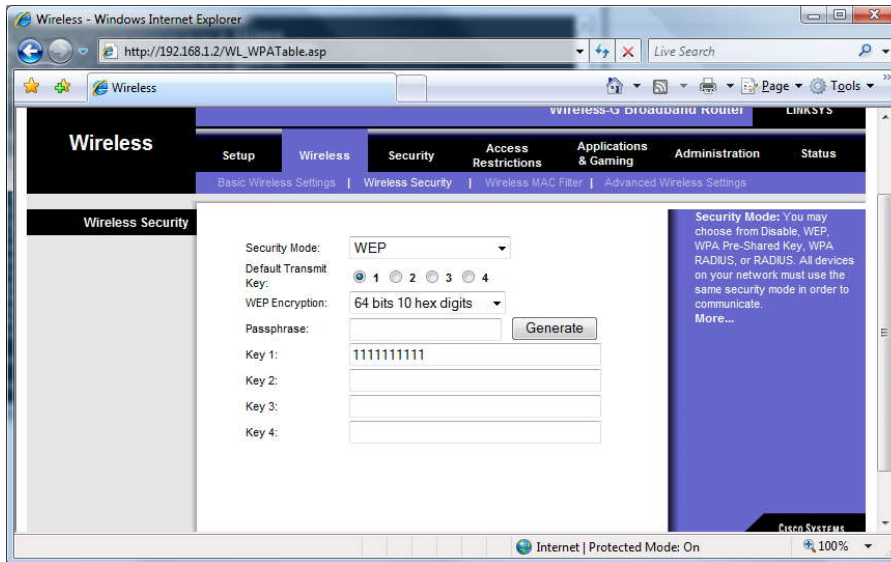
check make sure **DHCP Server** is **Enable** if it's not Enable, then go ahead click on Enable.

scroll down all the way to the bottom of the page.

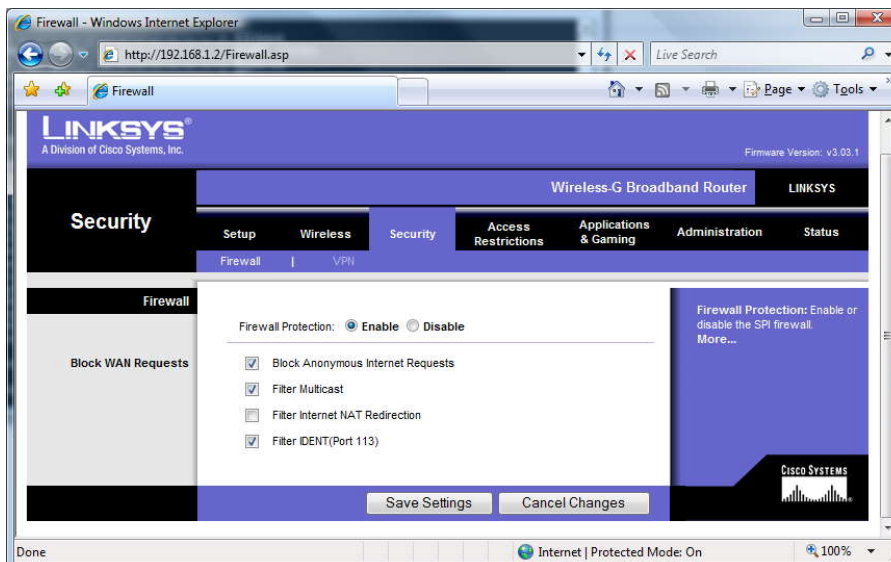
click on **Save Settings**



1. Click on **Wireless Tab** above.
2. Give a name of your wireless. I name mine **MyWireless**
3. make sure **Wireless SSID Broadcast** is **Enable**.
4. Click on **Save Settings**
5. Click **Continue** on the next page when you see **Settings are Successfully**

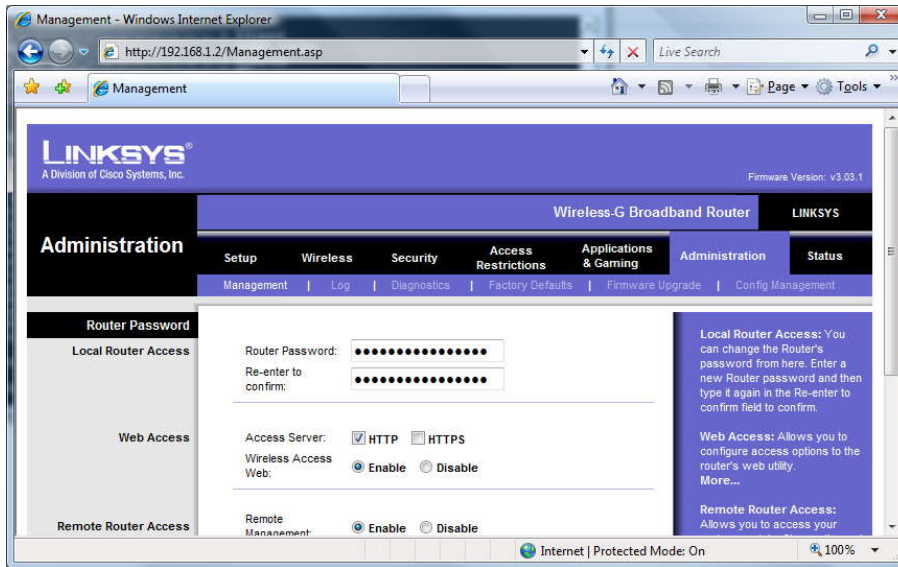


1. Click on **Wireless Security** under **Wireless** tab.
2. Select **WEP** for **Security Mode**.
3. WEP Encryption: **64bits 10 hex digits**, make it harder to guess
4. Key 1: **choose your key it has to be 10 characters**. in my case I like to use my phone with area code.
5. Click **Save Settings**



I will leave this screen up to you. if you have an issue with getting your stb to use IKS etc...

Try to **Disable the Firewall Protection** and uncheck all the **Block WAN Requests**.



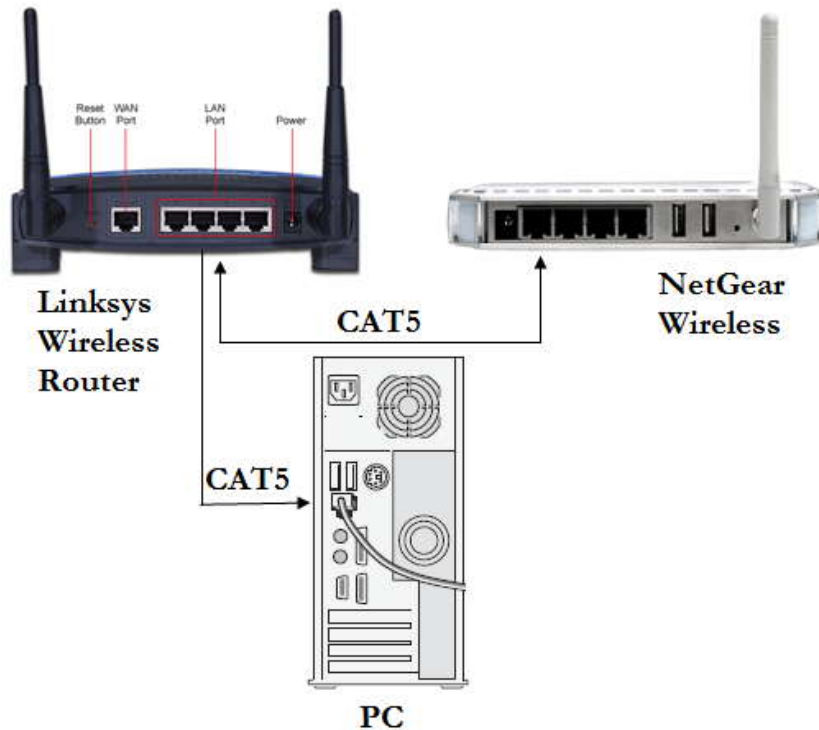
While you at this screen. go ahead and change your router password. if you don't the kid next door will messed everything up.

1. Click on **Administration** tab.
2. Type your new password in **Router Password** and line below that.
3. Click on **Save Settings**.

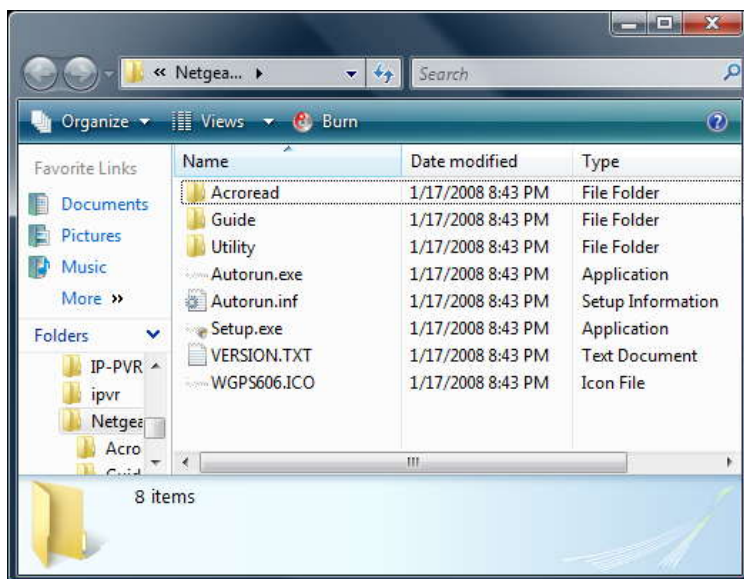
At this point you are halfway done with your configuration. your home wireless network is setup and secured. Now we need to work on Netgear for you NFusion.

NETGEAR WGPS606 CONFIGURATION

This config will work with any wireless router as long as you know the SSID and security key if you have one.

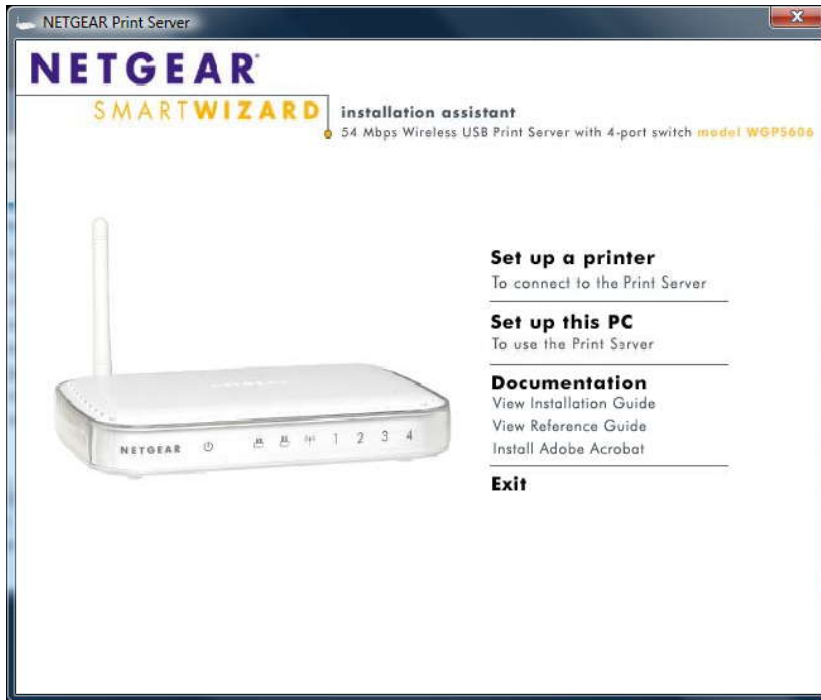


At this point, you can take out your Netgear WGPS606 and plug the network cable to the back of your Netgear and the other end plug it into one of the open LAN of the back of your Linksys wireless router then plug Netgear power adaptor so it is ON. Leave the router plug into your PC as it is.



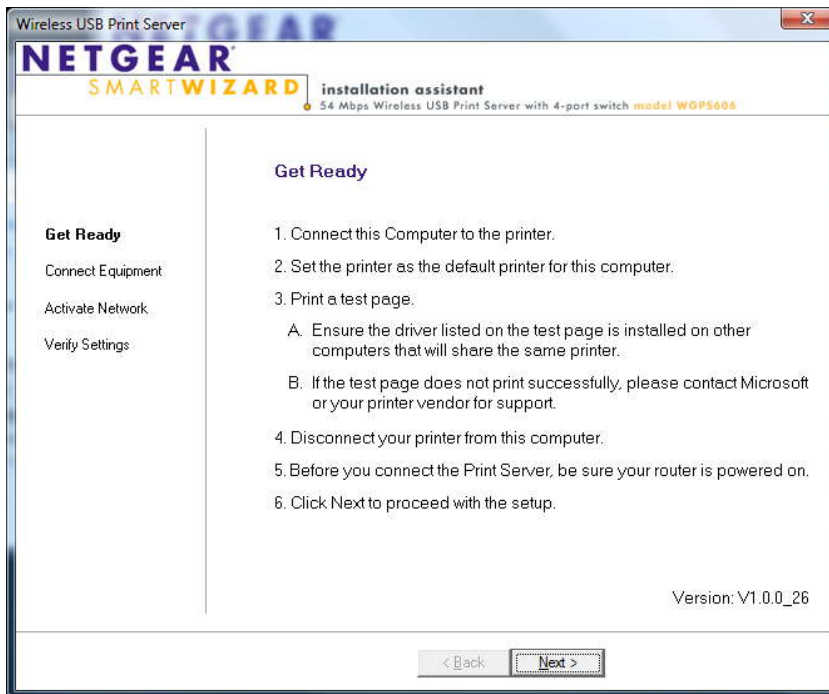
Once all the physical connect is good, do the following

1. Open up **Netgear WGPS606** that came with this manual.
2. Double click on **Setup.exe**

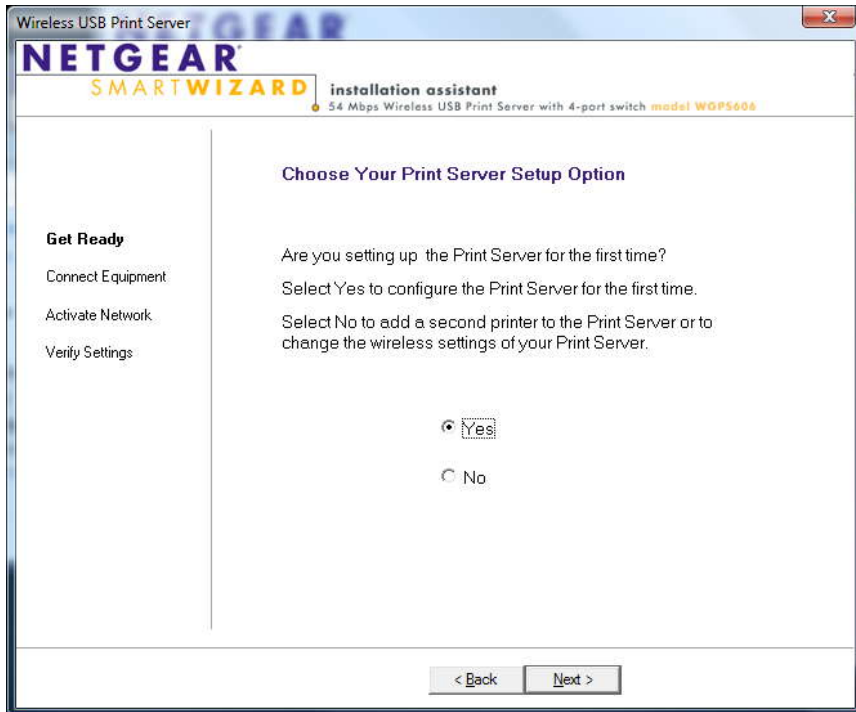


Software Wizard screen popup.

Click on **Set up a Printer**.



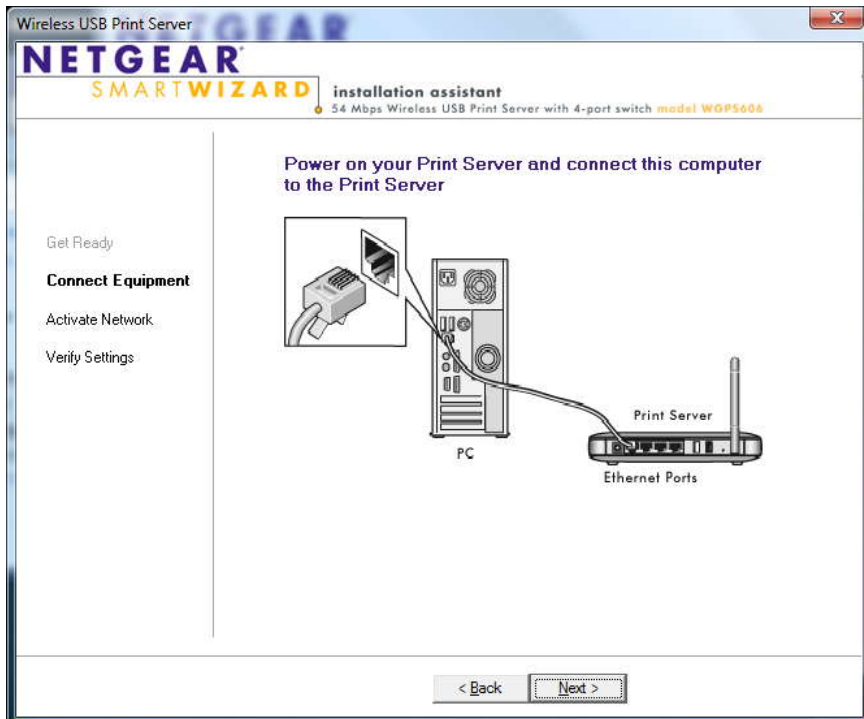
Click **Next>**



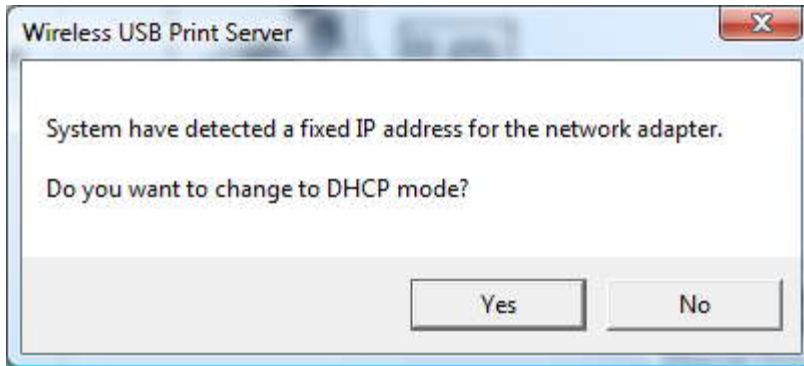
You are configure this Netgear for the first time.

Select **Yes**.

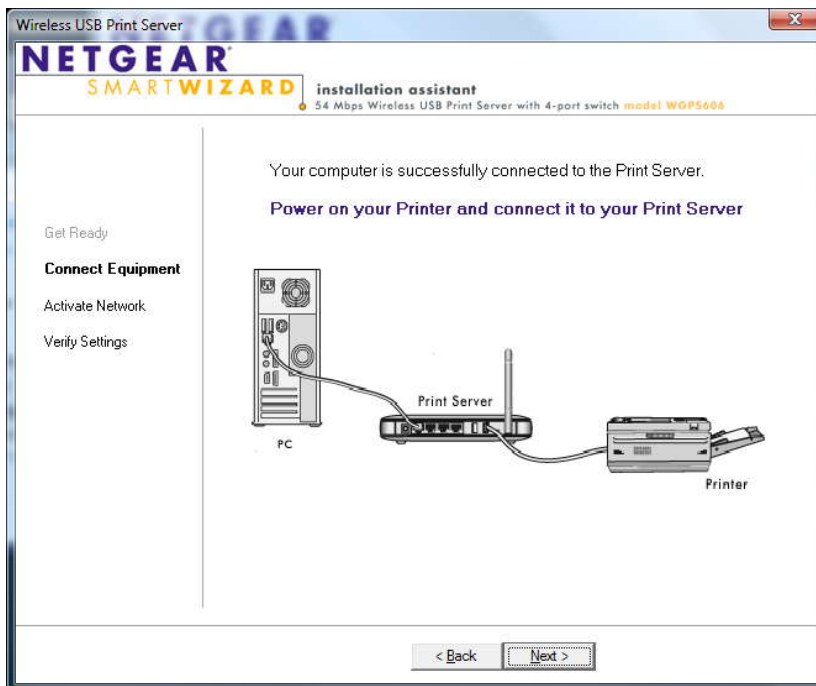
Click **Next>**



Click **Next>**

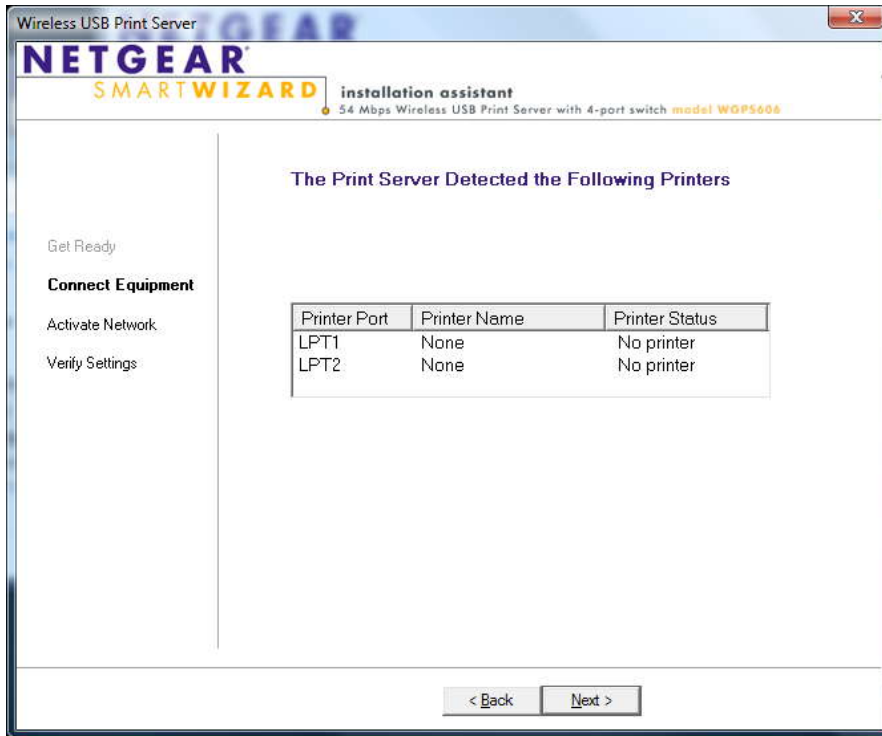


Click **Yes**

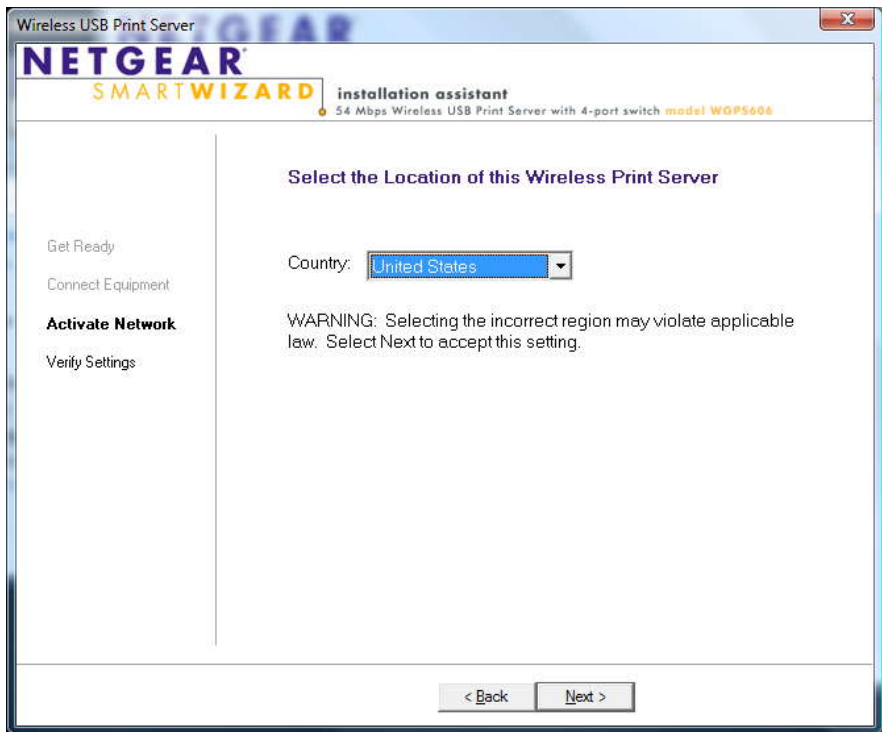


Your PC will search for Netgear Wireless Switch. it is very important that it found your Netgear at this point. if it cannot find, please check your physical connect again.

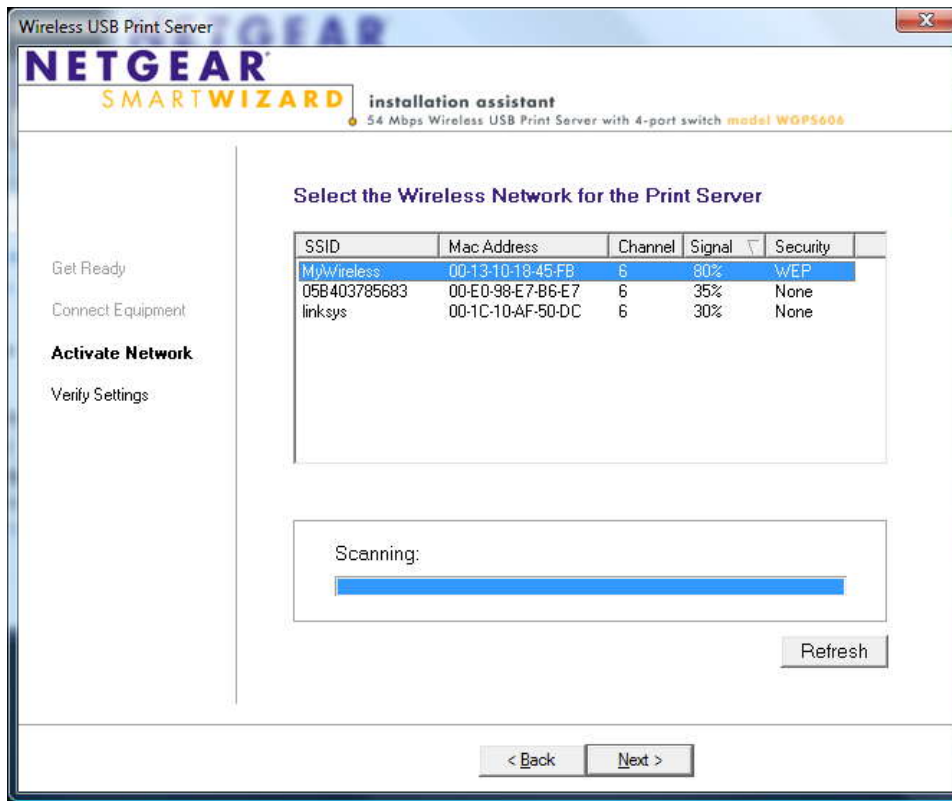
Click **Next>**



Click Next>



Click Next>



Now you should see your wireless router on this list. you should see at least one. mine is **MyWireless**

Click on ur Wireless Name.

Click **Next>**

Wireless USB Print Server

NETGEAR
SMARTWIZARD installation assistant
54 Mbps Wireless USB Print Server with 4-port switch model WOP5606

Provide the Security Settings Your Wireless Network Requires

Get Ready
Connect Equipment
Activate Network
Verify Settings

SSID: MyWireless
Security: WEP 64 Bit (Hex)
Authentication: Open System
Passphrase:
Key1: 1111111111
Key2:
Key3:
Key4:

< Back Next >

Do you remember the secure key we set for ur wireless?
it is 10 digits or characters long.
Type it in **Key1**
Click Next>

Wireless USB Print Server

NETGEAR
SMARTWIZARD installation assistant
54 Mbps Wireless USB Print Server with 4-port switch model WOP5606

Provide the Security Settings Your Wireless Network Requires

Get Ready
Connect Equipment
Activate Network
Verify Settings

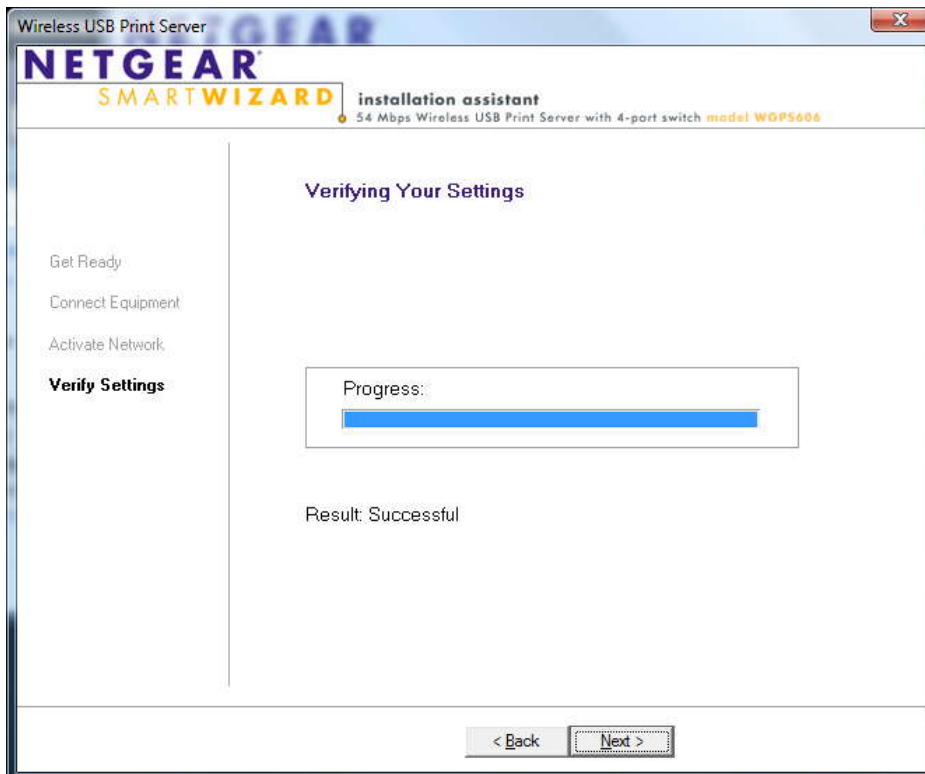
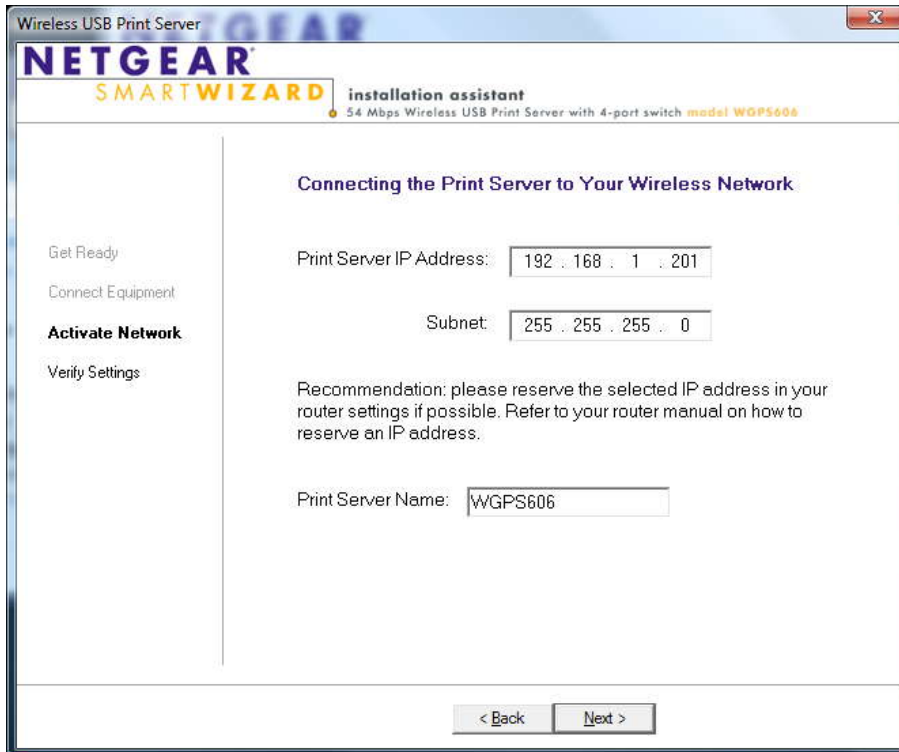
SSID: MyWireless
Security: WEP 64 Bit (Hex)
Authentication: Open System
Passphrase:
Key1: 1111111111
Key2:
Key3:
Key4:

This step takes several minutes, please wait...
Saving Print Server Settings:

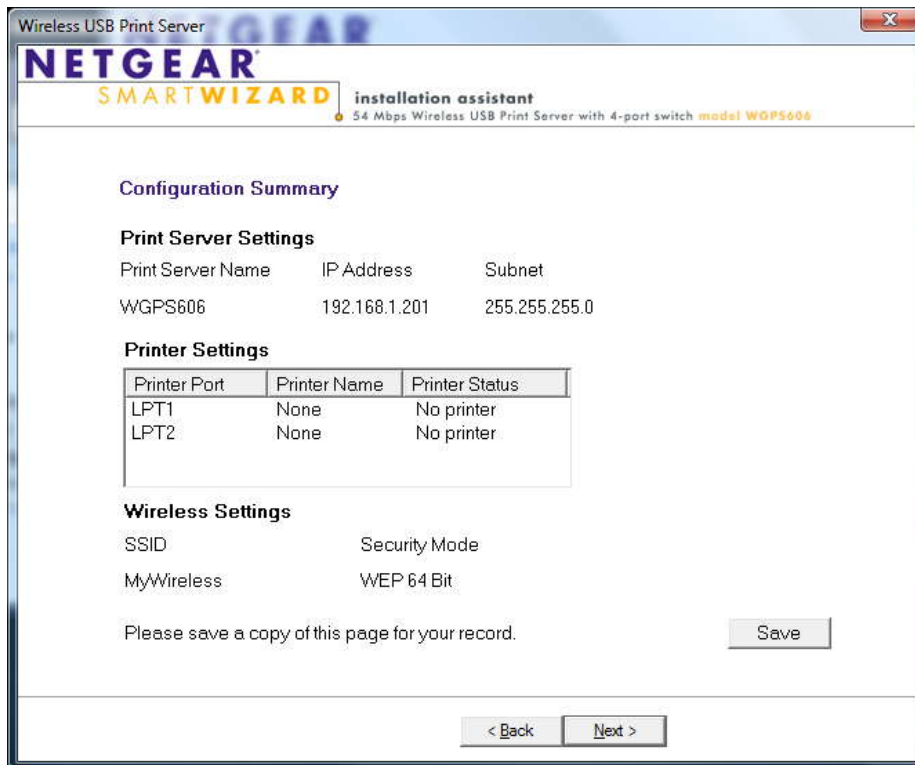
< Back Next >

Now your Netgear trying talk to your Wireless router.
it will tell you if you got wrong key.

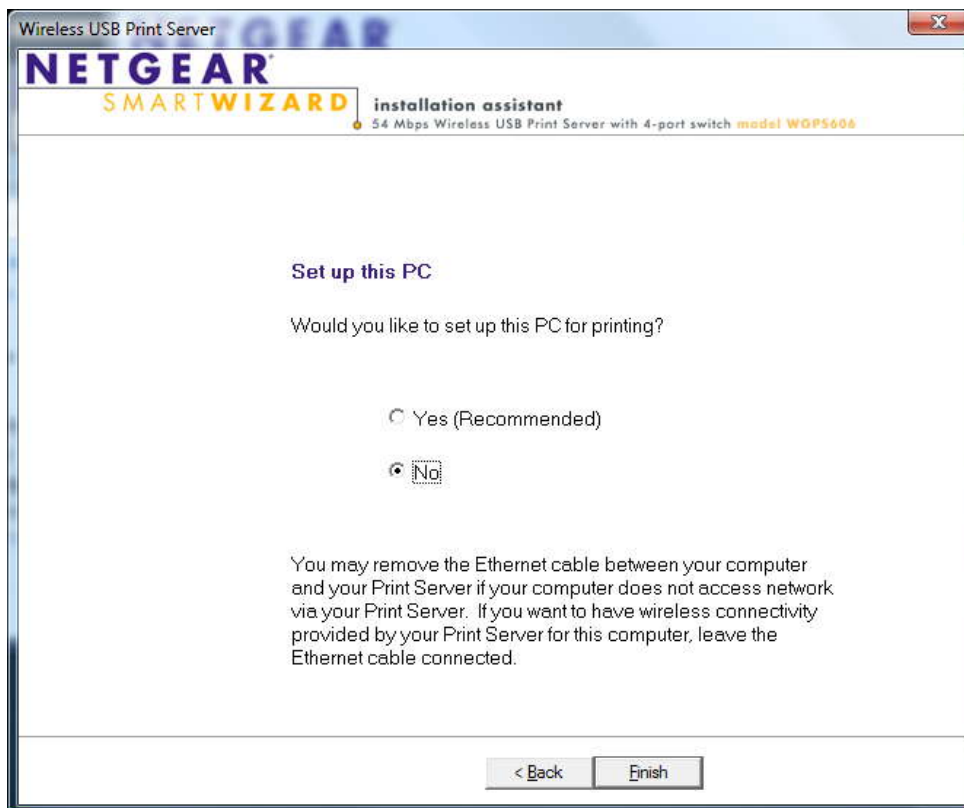
It is successfully authenticate to my wireless network.
It also telling you the Netgear new IP get from your wireless



Click Next>



Click **Next>**

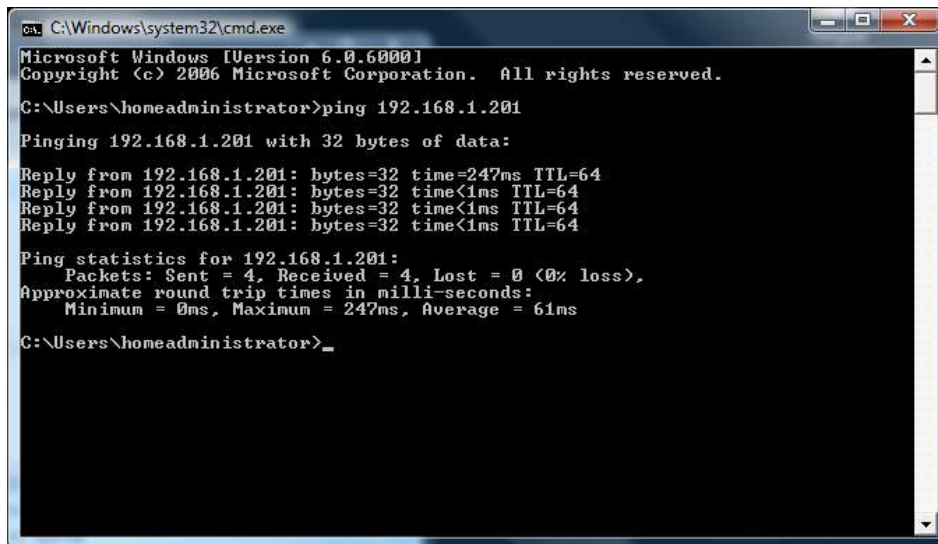


Click **No**

Click **Finish**



Click **Exit**

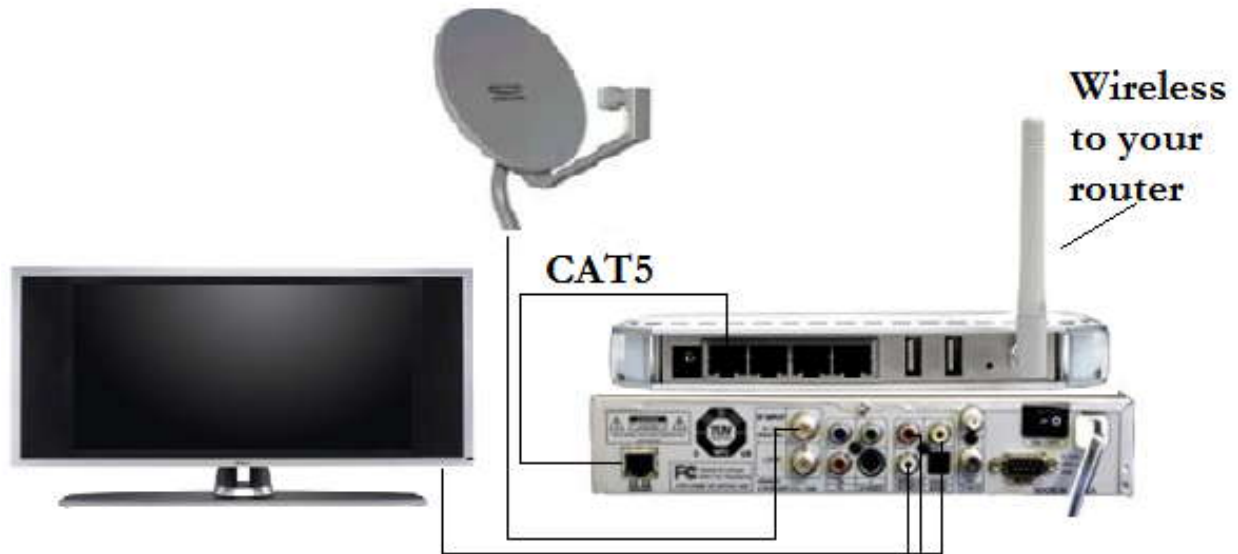


To check whether your Netgear is live.

1. Click **Start->Run** (XP)
Click **Start->Start Search** (Vista)
2. Type **CMD**, Press **Enter**
3. Type **Ping**(your netgear ip that you wrote down earlier.

if no Time out. you are good.

CONNECT YOUR NETGEAR TO YOUR NFUSION



If you not too sure how to hookup your Nfusion, you can follow the picture above. before you hookup your Netgear Wireless to your STB, I suggest you configure your STB first. you can download the step-by-step from our forums.

1. Disconnect Netgear Wireless from your wireless router if you have it hook up.
2. connect your STB to your sat cable.
3. connect your STB to your TV.
4. connect cat5 cable from your STB to your Netgear.
5. plug your Netgear plug to the wall outlet. power it on.
6. power on your stb.

Everything should be working perfectly if all your physical connect is good and your wireless is not out of range.

Once your STB completely ON. we need to check if it get IP from your wireless network.

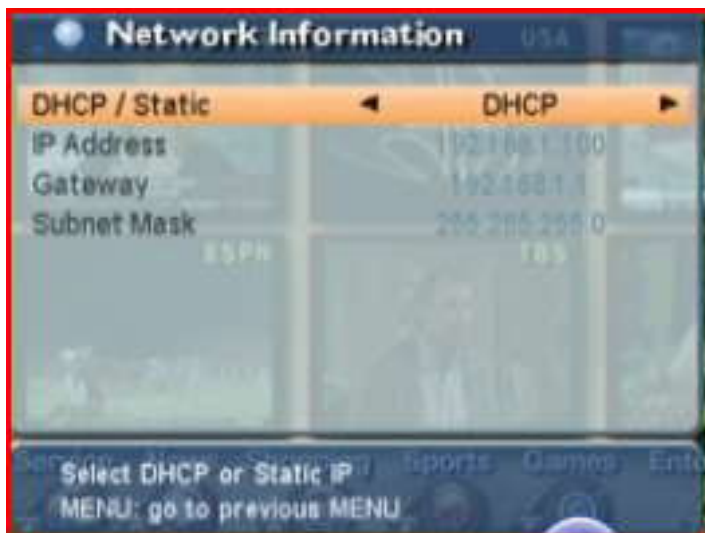


Press **Menu** button on your remote control

Scroll down to **Internet** press **OK**



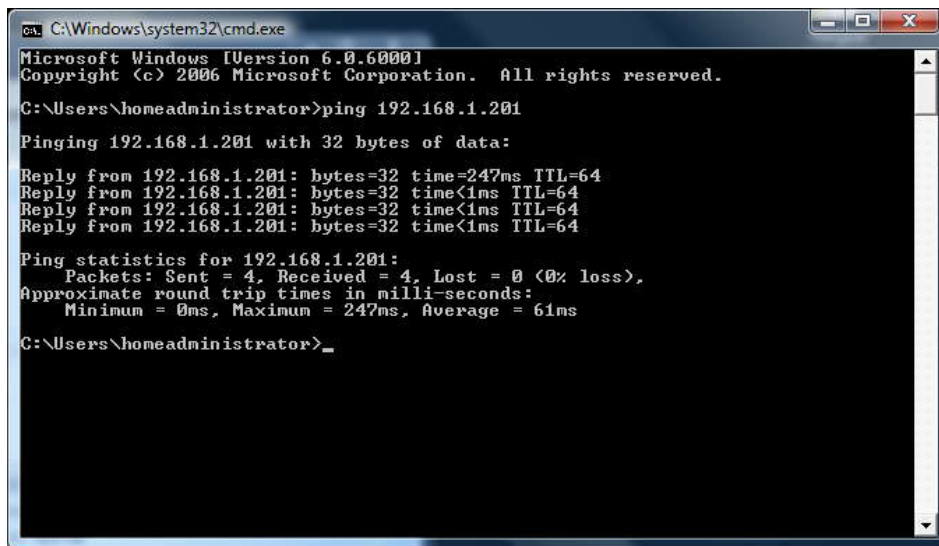
Make sure **Network Connection = ON**



You should see the IP address something like 192.168.xxx.xxx that mean your wireless is working.

If you dont get ip address from you Netgear then make sure all the physical connection are good.

1. turn off STB from the back switch
2. Unplug Netgear power from wall outlet
3. Recycle your Wireless router, wait for 30sec
4. Plug Netgear power back to wall outlet, it should power ON, wait for 30sec
5. Turn on your STB.
6. Check again if your STB get IP from your Netgear. if you got it then it is good. if not.



```
cmd C:\Windows\system32\cmd.exe
Microsoft Windows [Version 6.0.6000]
Copyright (c) 2006 Microsoft Corporation. All rights reserved.

C:\Users\homeadministrator>ping 192.168.1.201
Pinging 192.168.1.201 with 32 bytes of data:
Reply from 192.168.1.201: bytes=32 time=247ms TTL=64
Reply from 192.168.1.201: bytes=32 time<1ms TTL=64
Reply from 192.168.1.201: bytes=32 time<1ms TTL=64
Reply from 192.168.1.201: bytes=32 time<1ms TTL=64

Ping statistics for 192.168.1.201:
    Packets: Sent = 4, Received = 4, Lost = 0 (0% loss),
    Approximate round trip times in milli-seconds:
        Minimum = 0ms, Maximum = 247ms, Average = 61ms

C:\Users\homeadministrator>_
```

To check whether your Netgear is live.

1. Click **Start->Run** (XP)
Click **Start->Start Search** (Vista)
2. Type **CMD**, Press **Enter**
3. Type **Ping**(your netgear ip that you wrote down earlier.

if Time out. your wireless out of rang. if not out of range. Do step 1-6 again.